

長者及殘疾人士的家居評估服務



服務申請及查詢

生活環境輔導服務

- 九龍紅磡香港理工大學育才道S座地下
- Tel 2364 2345 Fax 2764 5038
- Email: admin@rehabaidsociety.org.hk
- Web: www.rehabaidsociety.org.hk

捐款

如欲資助本會，幫助殘疾人士改善生活質素，可透過以下途徑捐助：

- 郵寄支票（抬頭請寫復康資源協會）
- 直接存入香港上海滙豐銀行（戶口號碼：004-198-4-013514）
- 繳費靈（商戶編號9475，請以電話號碼為賬單編號，然後致電18033或登入www.ppsk.com捐款）
- 電子網上銀行捐款（請登入個人網上銀行，選擇商戶名稱「復康資源協會」，並以電話號碼作為賬單編號捐款。）
- 攜以下條碼到任何一間7-ELEVEN便利店捐款。

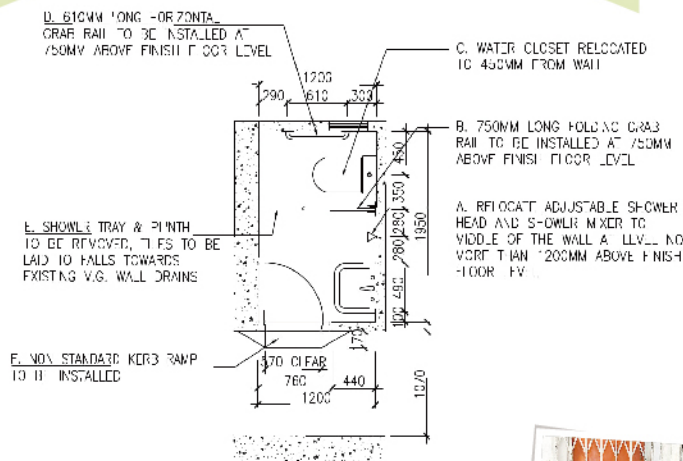
捐款港幣100元以上，可憑收據免稅。



3639 9000 0000 0013 6

“根據2017年衛生署長者健康中心的統計，在四萬五千多名的65歲以上的社區長者中，10.1%曾於半年內至少跌倒過一次，曾跌倒的長者中，有10.2%因而骨折。”

（資料來源：衛生署長者健康服務）



生活環境對長者及殘疾人士的重要

長者跌倒可以導致嚴重的後果，影響長者的自我照顧能力及生活質素。

在現有的公共屋邨居住單位，如需改建以切合個別長者及殘疾人士的需要，根據治療師的評估報告，房屋署可能會負擔所涉及的工程費用。

倘若殘疾人士現居單位因環境限制未能改建，可以和家人申請邨內或邨外調遷。

適切的家居改裝能減低意外的發生從而提升長者及殘疾人士的生活質素。本會的專業團隊可就單位的裝置改裝需要，或單位編配提供專業報告。



家居環境審察及評估



長者及殘疾住客健康評估



空間規劃及建議合適設備



專業服務

復康資源協會提供獨特的跨專業服務，可以有效地發揮康復過程中保健治療及建設環境所需的協同作用。我們的團隊包括：

醫療保健專業人才 - 職業治療師、物理治療師和健康管理專家；

環境設計專才 - 建築師、空間規劃師、無障礙設計顧問及室內設計師。

我們經驗豐富的专业團隊，善於塑造具「生命昇華」的建設空間，從而提升患者的身體功能和生活素質。

服務範圍

我們提供顧問服務予個別居住單位及公共建築，包括：

- 治療師和建築師團隊就設施作出審察及評估
- 就供給特殊需要人士的無障礙設施作出評估
- 空間規劃，包括：室內及室外設施
- 因應特殊需要人士提供建築及室內設計建議
- 建議合適的傢俱、裝置及設備
- 因應個別需要「度身訂做」的其他服務

不論是公營或私營房屋，商業大廈，或公共建築業主，我們都樂意協助。

服務收費

有關報價費用，請聯繫本協會查詢。

復康資源協會是一個註冊慈善組織，可因應申請者財政及生活狀況提供費用減免或豁免。

Environmental Assessment for Elders and Persons with Disabilities



Service Inquiry and Referral

Environmental Advisory Service

- 📍 G/F, Core S, Yuk Choi Road, The HK Polytechnic University, Hungghom, Kowloon, Hong Kong
- ☎ Tel 2364 2345 ☎ Fax 2764 5038
- ✉ Email: admin@rehabaidsociety.org.hk
- 🌐 Web: www.rehabaidsociety.org.hk

Donation

You can help improve the quality of life of people with disabilities through contribution in the following means:

1. Cheque by mail (Cheque payable to REHABAID SOCIETY).
2. Deposit to HSBC (The Hong Kong & Shanghai Banking Corporation Limited - Account No. 004-198-4-013514).
3. PPS (merchant code 9475). Please register your phone number as bill number, then call 18031 or visit www.pps.hk to make your donation.
4. For online banking services, please select "Rehabaid Society" from the payee list. Use your phone number as the bill number for donations.
5. Bring the barcode below to any 7-ELEVEN Store to make your donation.

Donations over HK\$100 are tax deductible with receipt.

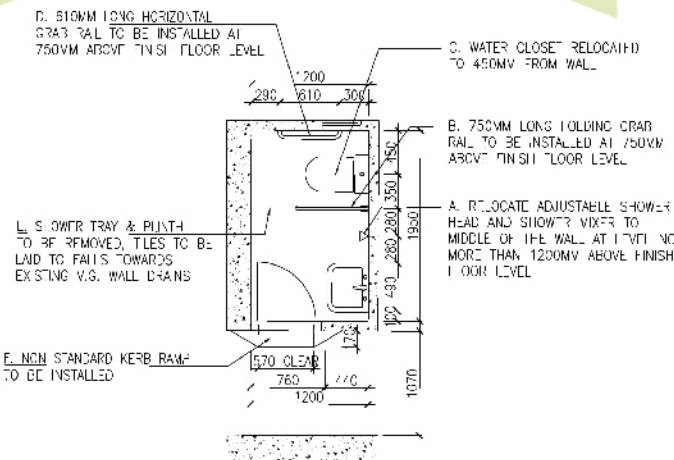
7-11 (ISDC)



3639 9000 0000 0013 6

"According to the statistics from Elderly Health Centre in 2017, among 45,000 aged 65 or above community-dwelling elders, 10.1% had experienced falls at least once within 6 months. Among those who had falls, 10.2% had fractures."

(Source: Elderly Health Service, Department of Health)



Therapeutic Effect of Life-Enhancing Environment

Fall is one of the most disabling conditions of the elderly, which will have a significant impact on the elders' functioning, independence, and quality of life.

If a Public housing rental flat has to be converted to cater for the needs of individual elders or persons with disabilities (PWDs), the Housing Department (HD) may undertake the full cost incurred if an assessment report by therapist is provided.

In cases where conversion of an existing flat is not feasible due to physical constraints, PWDs may apply for transfer to another flat.

Appropriate home renovation can reduce the occurrence of accidents and improve the quality of life of elders or PWDs. Our professional team can provide the assessment report for the matters related to the adaption work and flat transfer.



Space planning and selection of fittings

Expertise & Services

Rehabaid Society is uniquely set up with a multi-disciplinary team comprising of:

Healthcare Professionals including Occupational Therapists, Physiotherapists, and Health Management Specialists.

Environmental Design Specialists including Architect, Space Planners, Access Consultant, Interior Designer.

Our professional team is experienced in creating a "life-enhancing" environment that improves the individual's ability to function as well as their living quality.

Scope of Service

We provide consultancy services to individual flats & public buildings including:

- Facilities Assessment & Appraisal by Therapists and Architects
- Access Audit on barrier-free provisions
- Space Planning, including indoor and outdoor facilities
- Architectural Design, Interior Design of new or renovation & retrofitting of premises for people with special needs
- Selection of finishes, furniture & fittings
- Other customized services

Whether you are living in public or private housing, or owners of commercial / public buildings, our team will be happy to assist.

Service Fee

Please contact our office for fee quotation.

Rehabaid Society is a registered charitable organization. We offer a fee deduction or waiver to the applicant, subject to their financial & living condition.



Home assessment and appraisal



Assessment of people with special needs